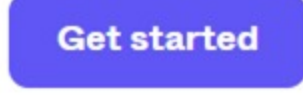


Set up a Figma account

To set up a Figma account, go to:

www.figma.com

Then, click the **Get started** button in the upper right corner.



You can create a new account by using your email address and creating a new password. You may also be asked if you want to create an account using a third-party login method.

Email

Password

Create account

Then you'll be asked to type your name and indicate the kind of work you do by selecting from the dropdown. Select if you want to join Figma's mailing list. Next, click the Create account button.



Tell us about yourself

Your name

What kind of work do you do? *

I agree to join Figma's mailing list

Create account

You will need to verify your email address by accessing your inbox and clicking the verify email link. You will be taken back to the Figma website to enter your password and log in.

Email

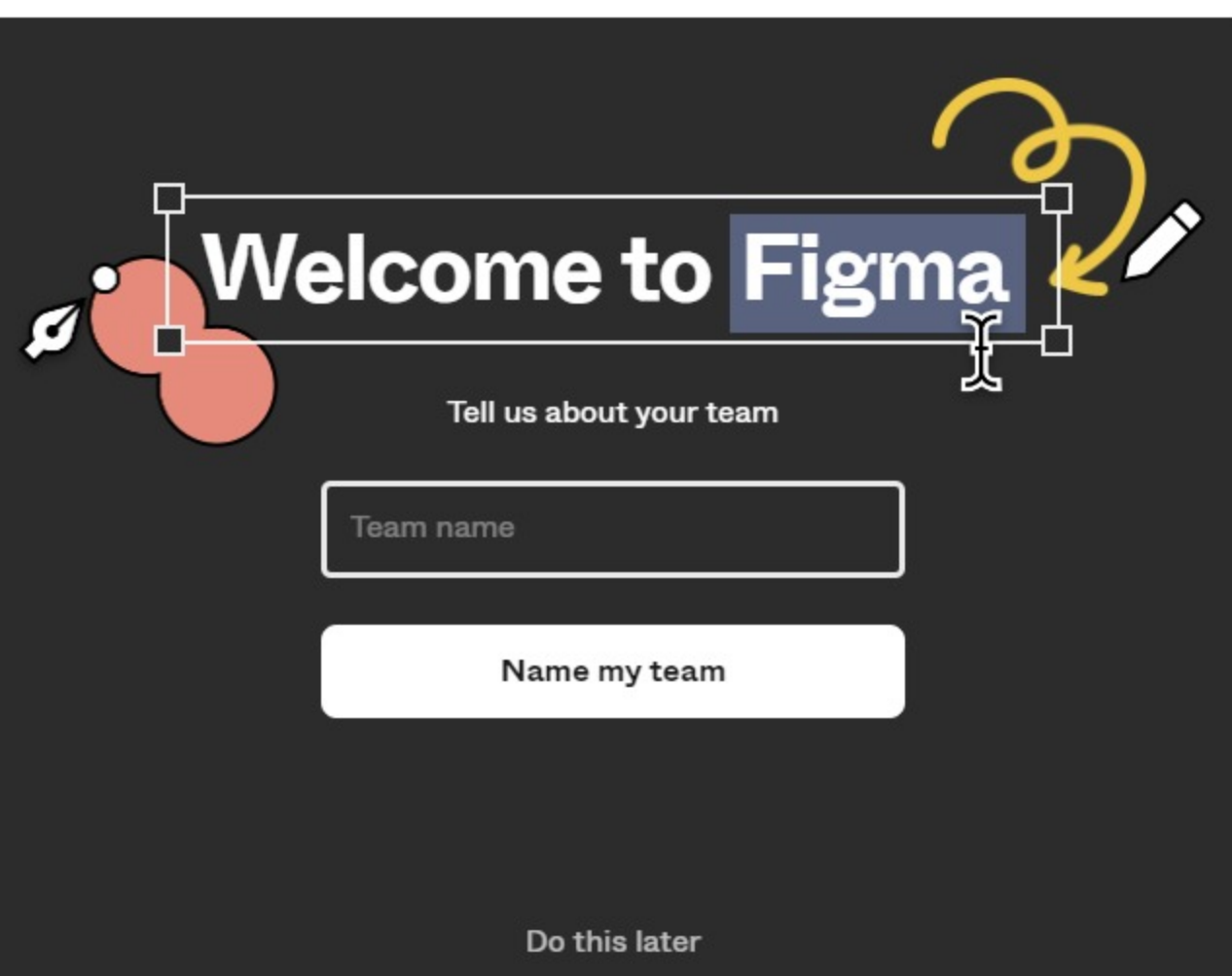
Password

Log in

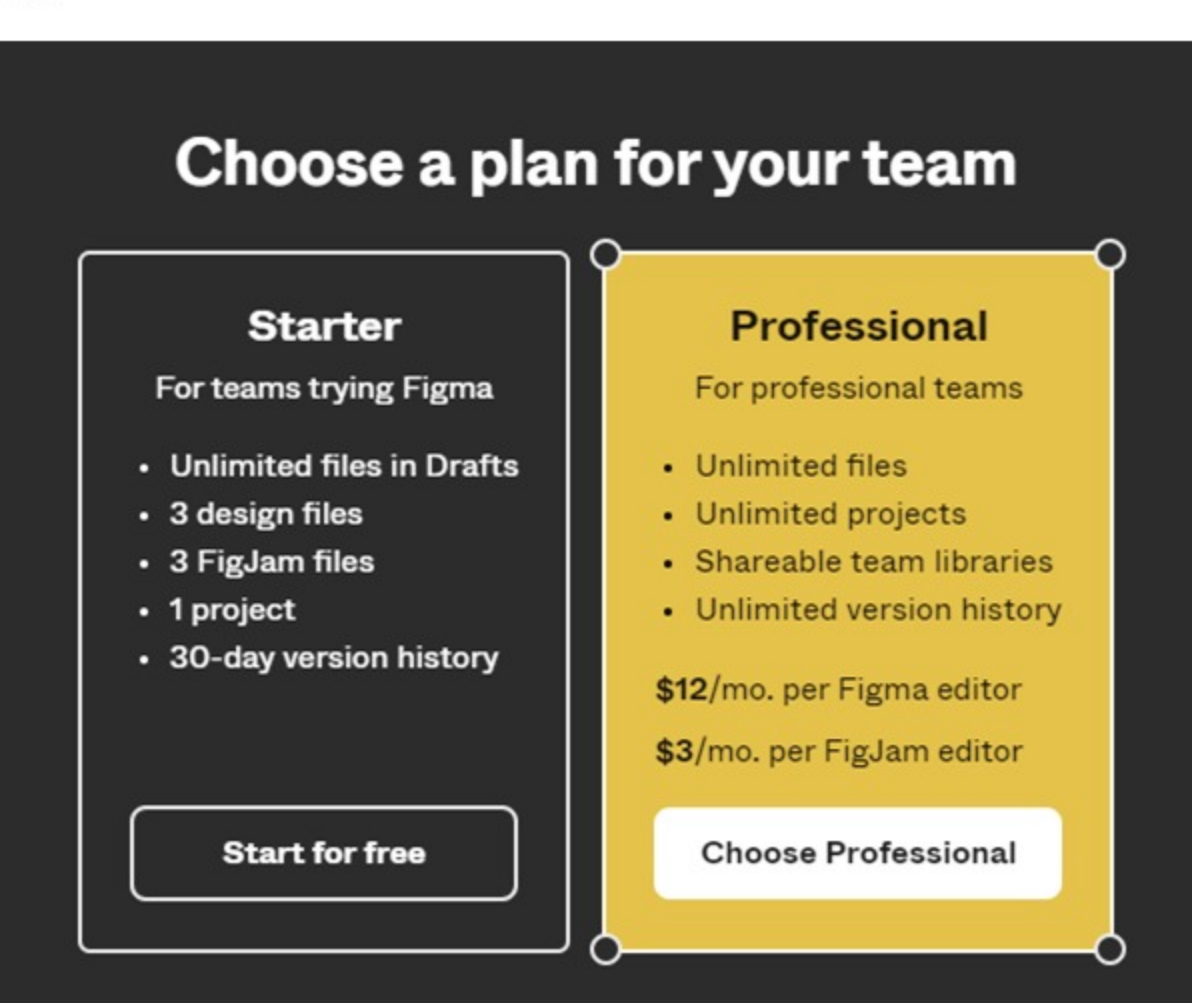
[Log in with SAML SSO](#)
[Forgot password?](#)

No account? [Create one](#)

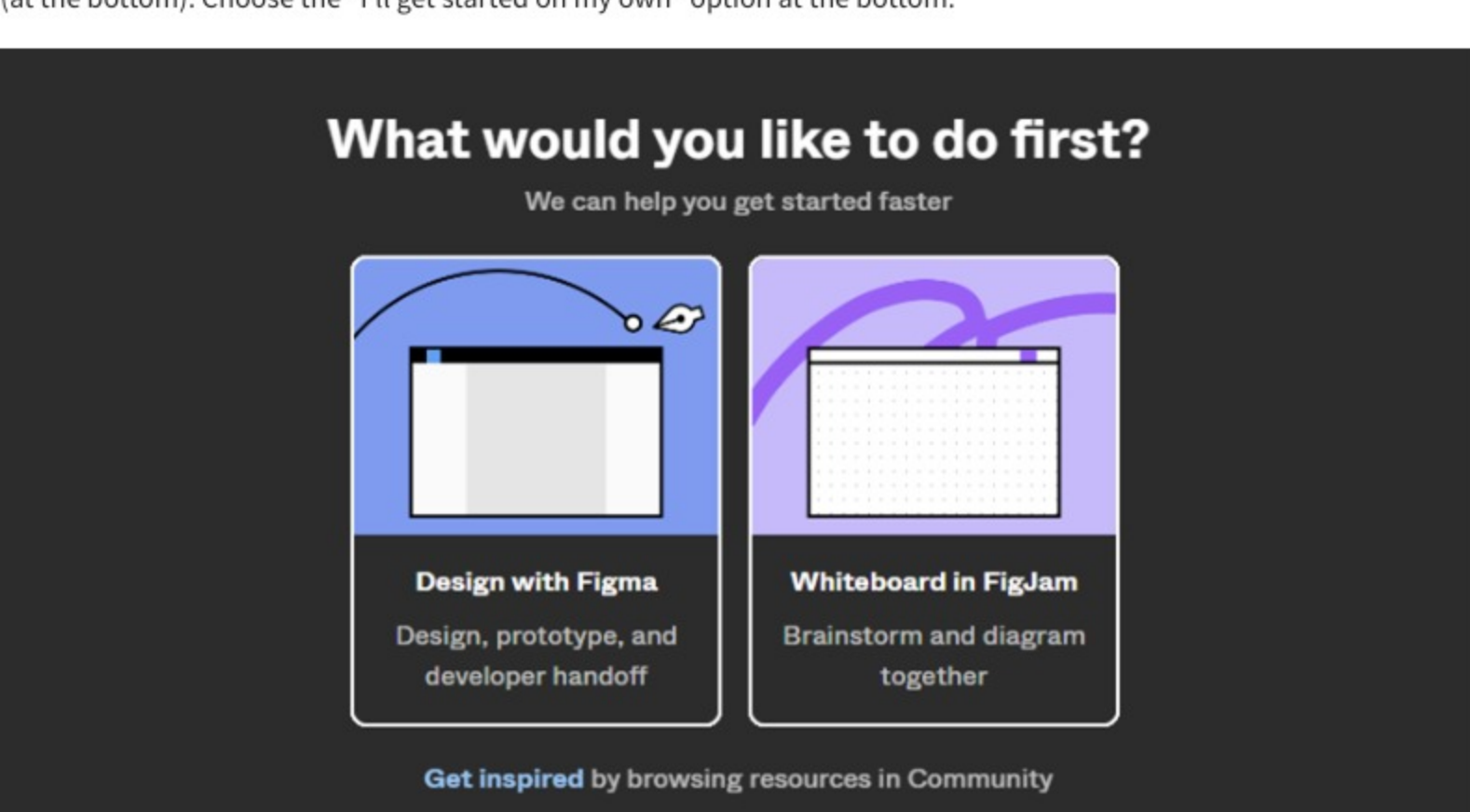
After you successfully log in, you will be asked if you're part of a team. You can skip this step by clicking "Do this later" below.



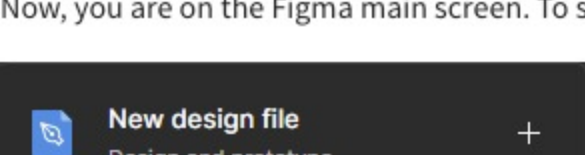
Then, you'll be asked if you want to create a free or professional account. You may choose the free account option for now.



Next, you'll be presented with three options: "Design with Figma", "Whiteboard in Figma," or get started on your own (at the bottom). Choose the "I'll get started on my own" option at the bottom.



Now, you are on the Figma main screen. To start designing, click the "New design file" at the top left.



Congratulations on creating your Figma file. You're ready to start practicing what you learn in this course.

Happy designing and happy learning!

