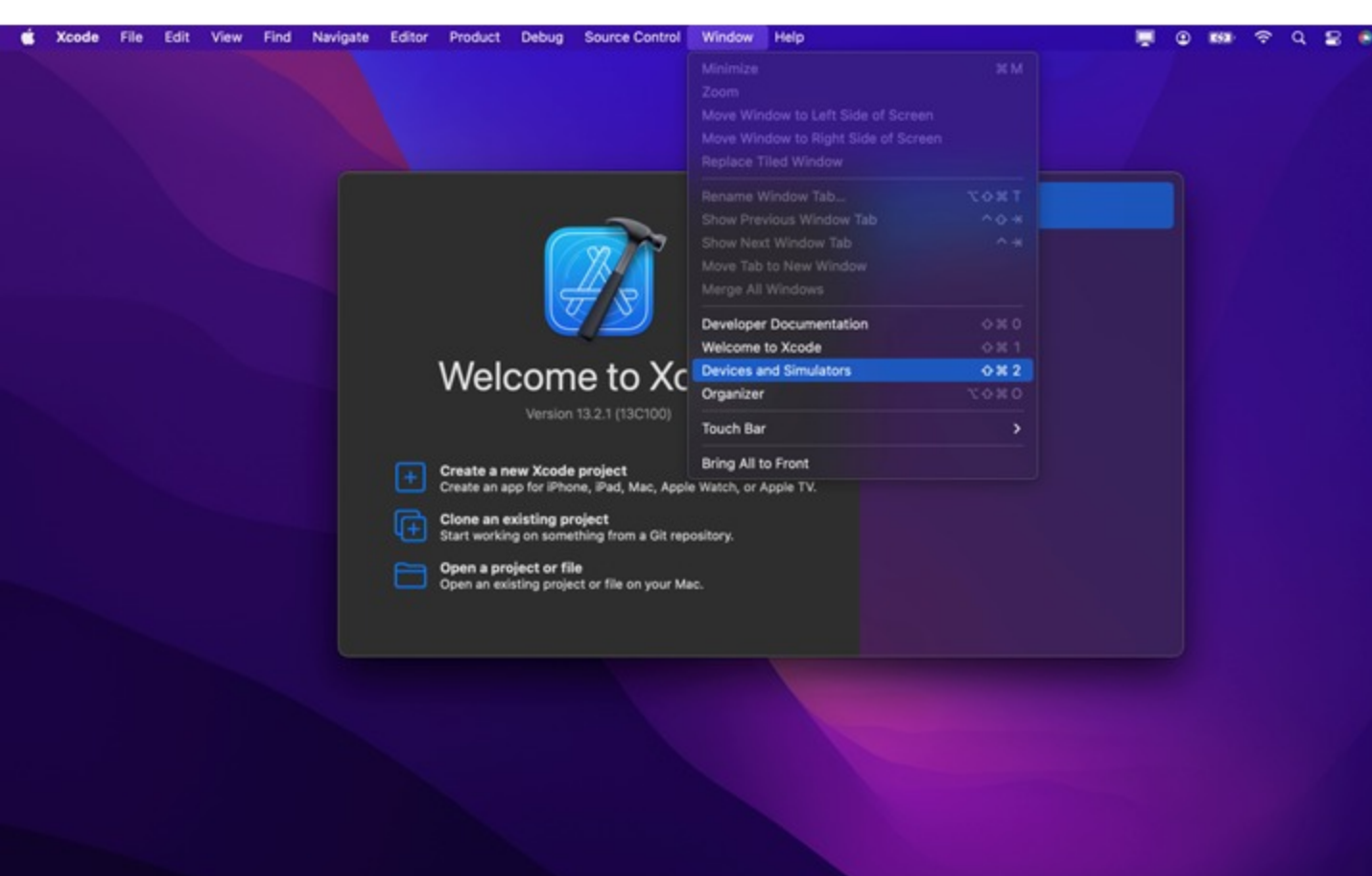


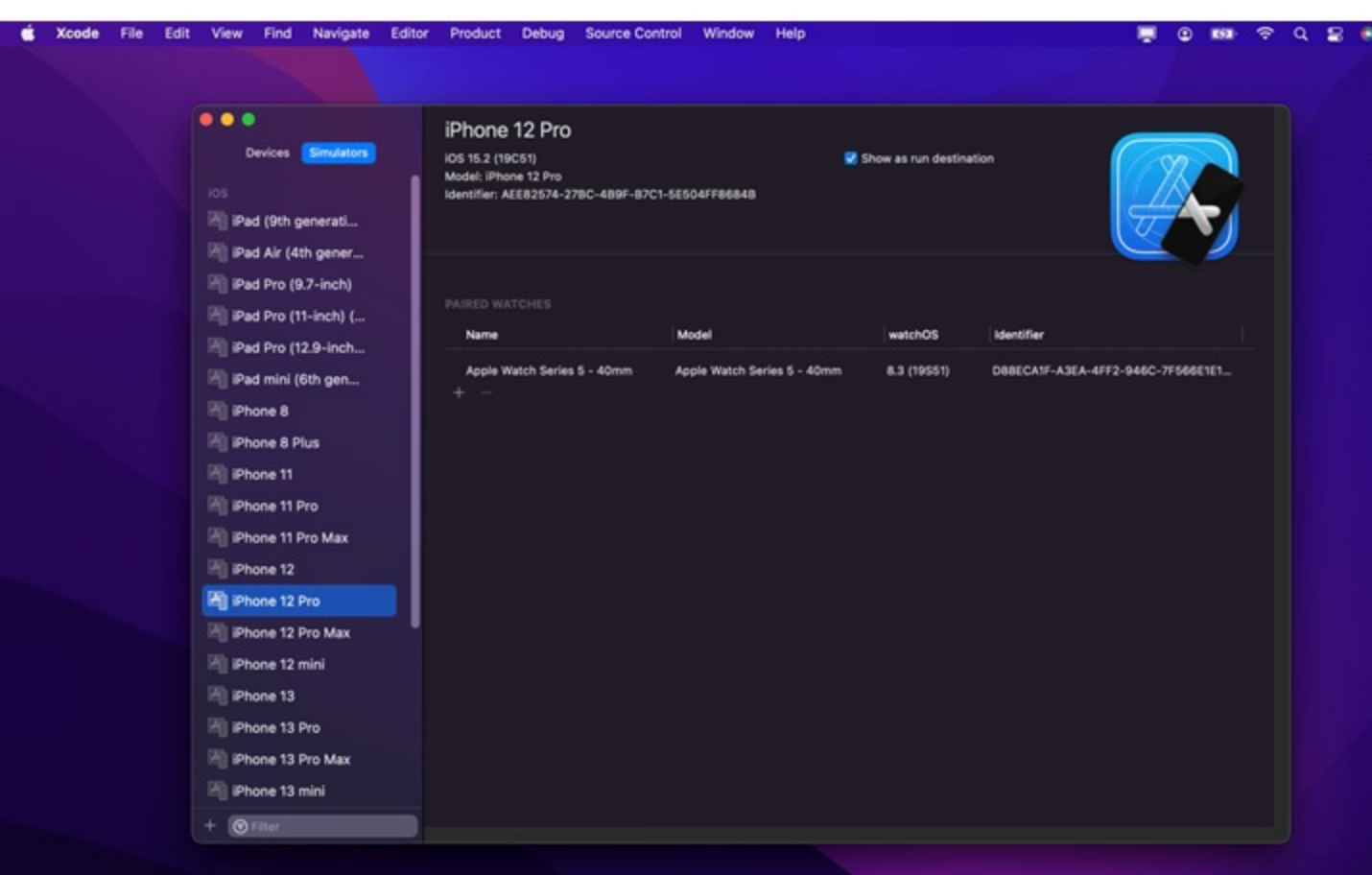
Setting up simulator software

To use the Simulator, ensure you have installed XCode IDE on your computer.

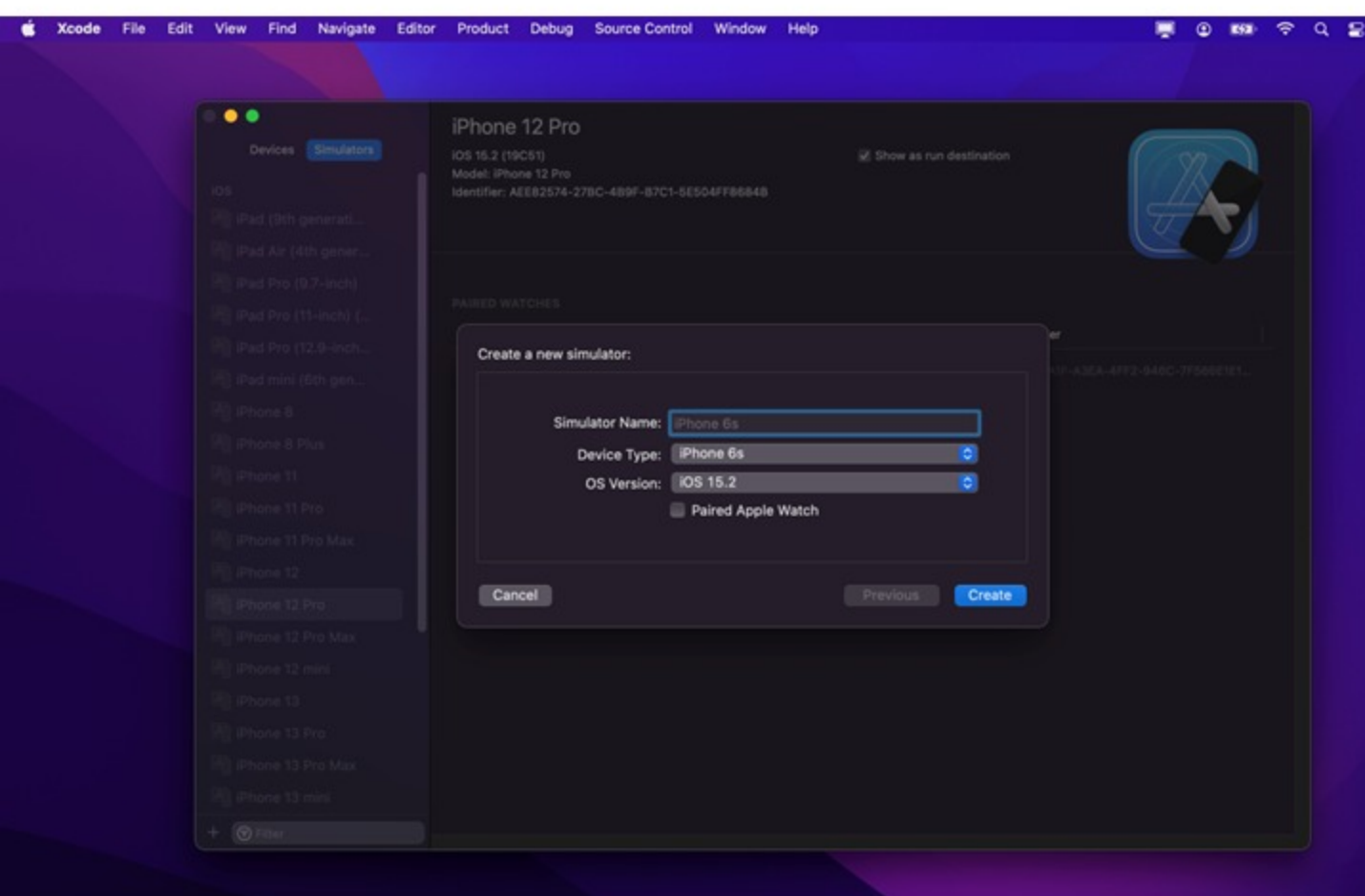
Next, click on **Window> Devices and Simulators**.



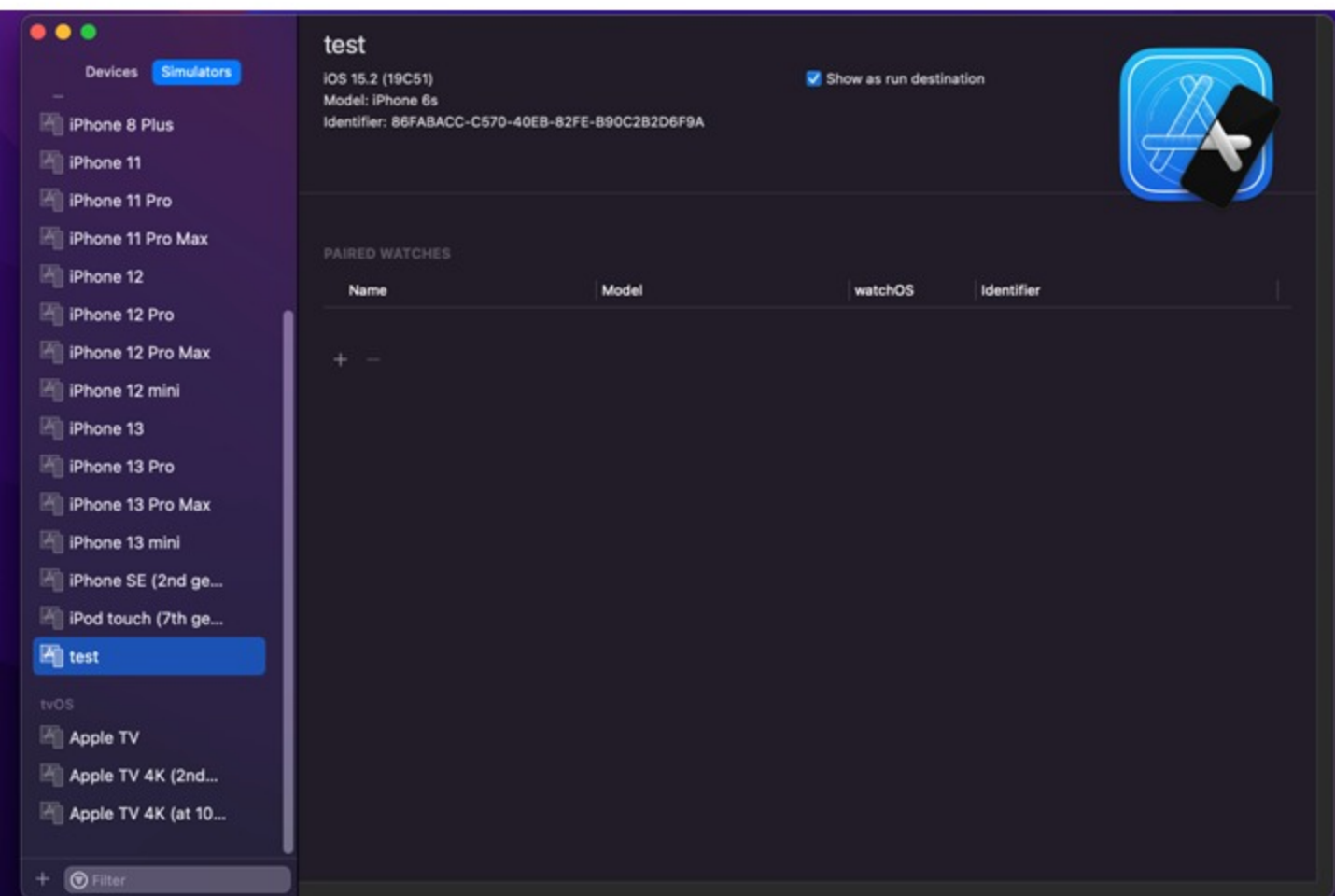
In the next window, click on the plus button on the bottom left of the window to create a new simulator.



In the new window, you can specify the name of the simulator, device type and OS version.



After creating the simulator, you will be able to see it on the list of available simulators in this window.



Mark as completed