

A project manager's role within different organizational structures

In the last video, you learned about the way a company is arranged, which is called **organizational structure**. You also learned that two of the most common organizational structures are **Classic** and **Matrix**.

Understanding the differences in Classic and Matrix organizational structures can help you ask questions during a job interview to fully understand the role and responsibilities you are considering. This will also help you understand which skills will be most important for you to have if you get the position.

Once you are hired into a role, knowing a company's organizational structure can help you identify key points of communication and key stakeholders. It can also help you navigate within the organization when you need support or need to determine who has authority in a certain situation. Let's examine the characteristics of each of these organizational structures in greater depth so you can identify the type of structure an organization has and how to navigate it as a project manager.

Classic organizational structures

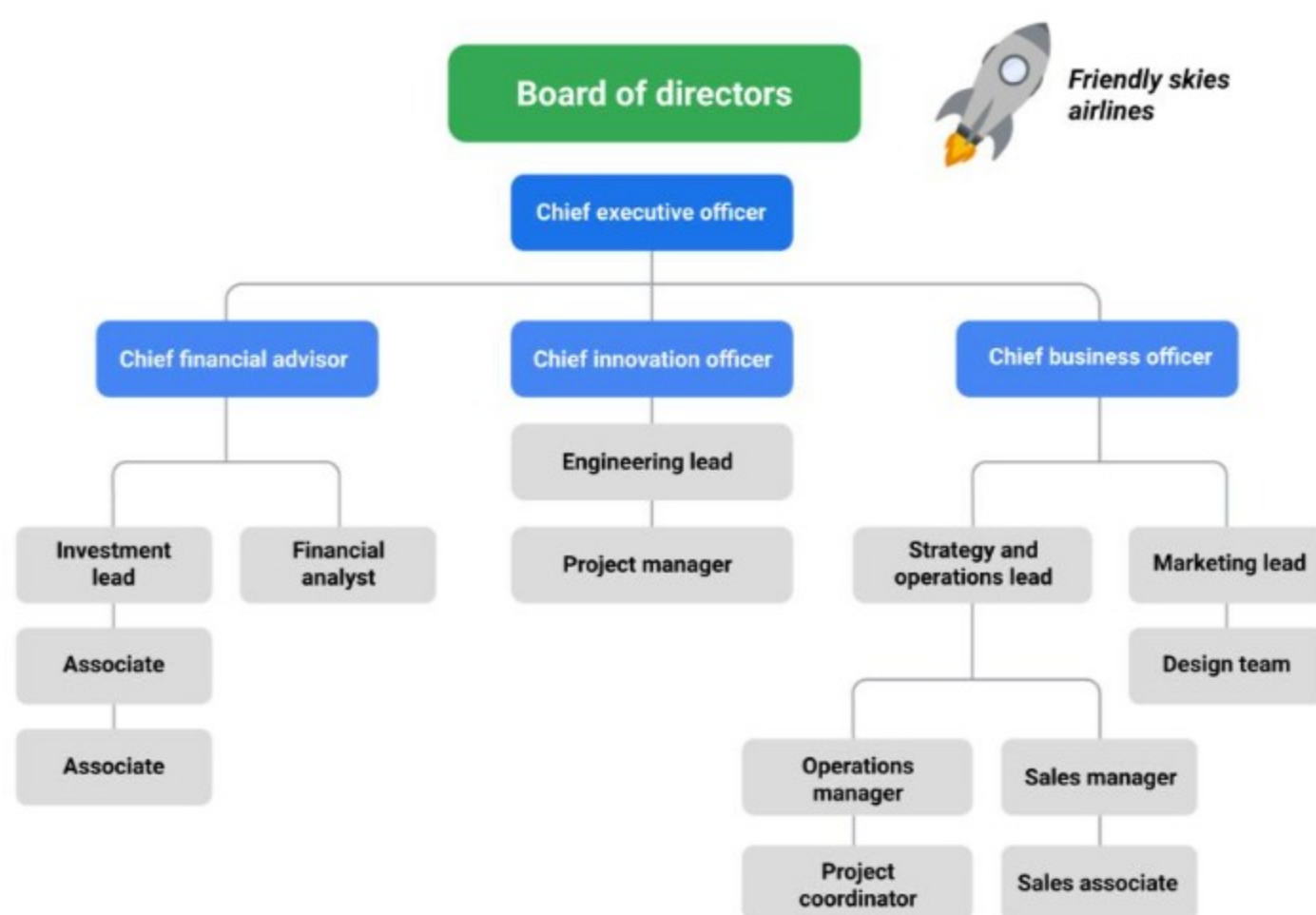
The **Classic organizational structure** is a top-down hierarchy system, where a Chief Executive Officer (CEO) has direct authority over several department managers. The department manager has direct authority over several other sections of employees. This system requires communication both up and down the ladder. In a Classic structure, authority comes from the top and filters to the bottom. Frequent reporting of project status updates may be required to pass up through management levels to keep higher leaders informed.

Classic organizations are also referred to as **functional organizations** because the organization is divided into departments based on function. Each department is led by a **functional manager**, and employees are grouped according to the functions of their role. For example, the main function of Friendly Skies Airlines, an airline company, is to fly airplanes. There are typically departments logically arranged to fulfill other important company functions, such as Marketing, Human Resources, and Strategy. Employees usually have a specialty within the organization and may not work within other areas during normal everyday operations.

Managing a project in a Classic organization

Friendly Skies Airlines has a Classic organizational structure, as indicated by its reporting or "org" chart.

Classic Org Chart



Imagine that the Friendly Skies Airlines Board of Directors approves an initiative to retrofit existing airplanes to carry more passengers. The CEO sponsors a project team to redesign the airplanes. The project will be led by a project manager from the Engineering and Innovation department and will require representatives from Finance, Marketing, Strategy, and Operations, along with several other team members from the Design department, to successfully complete the project.

The project team will typically remain in their reporting lines but act as their own assembled team. They do not fall under any of the existing functional departments. In the Classic organizational structure, the project builds from already existing departments to form teams.

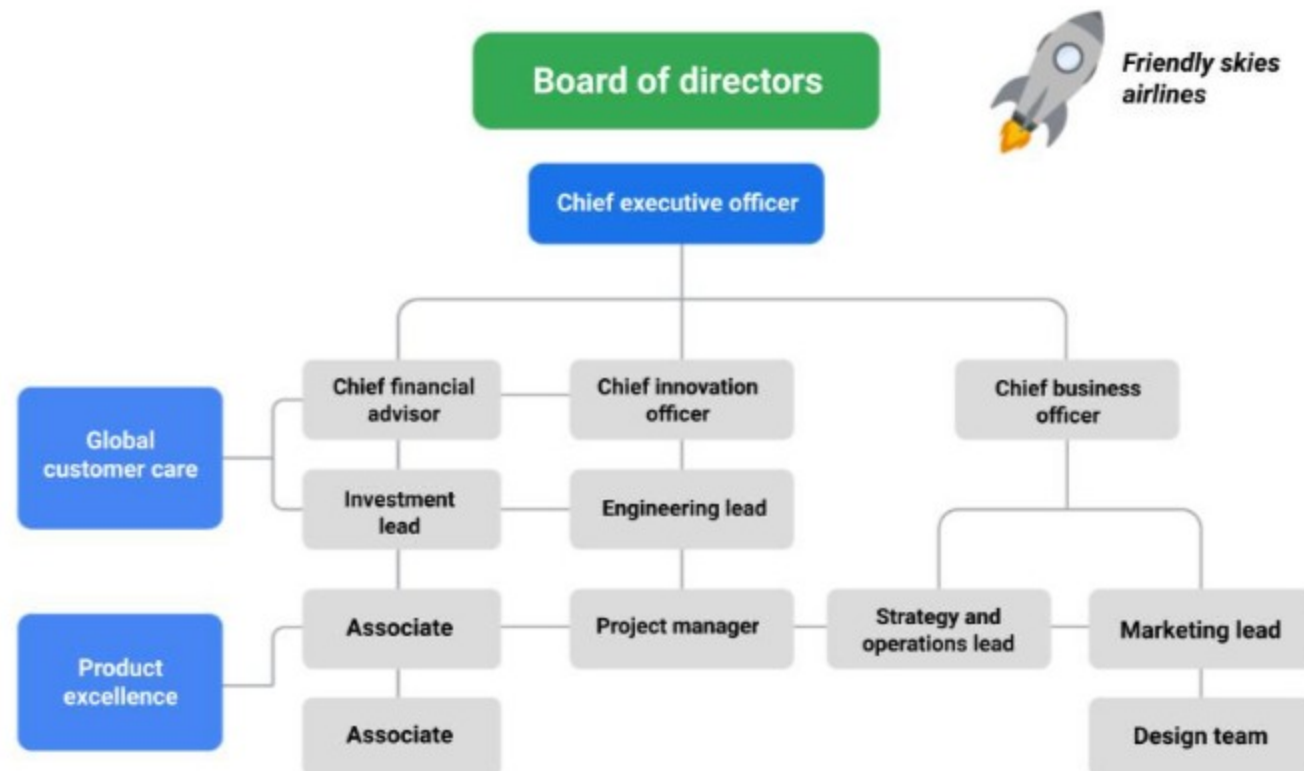
If you are a project manager in this type of structure, you may need to consult with functional managers to understand your resources and the capacity of each teammate, as well as to familiarize yourself with each function's internal processes and approval structure. Your authority may be slightly limited due to competing priorities, approval chains, and other complexities, but setting expectations up front will enable you to navigate the organization and execute your project successfully.

Matrix organizational structures

The **Matrix** structure differs from the Classic structure in that the employees have two or more managers. In Matrix structures, you still have people above you, but you also have people in adjacent departments with whom you will need to communicate on your work progress. Functional areas tend to cross paths more frequently, and depending on the nature of the work, the responsible manager for each area has the most authority.

As a project manager in a Matrix organization, a team will essentially have at least two chains of command, or managers. You can think of the project manager as being a temporary manager while assigned to the team. The functional manager is consistent regardless of the project a project manager is supporting. The visual below illustrates what the Friendly Skies Airlines would look like if it had a Matrix organizational structure.

Matrix Org Chart



Managing a project in a Matrix organization

Imagine that Friendly Skies Airlines is organized in a Matrix structure. Their Product Excellence team develops a new amenity kit for long-haul flights. They ask the Project Manager to help gather marketing materials that present research data about how this product fulfills passenger desires. The Project Manager is working on behalf of the Product Excellence team, but they are able to work in partnership with the Marketing team to create these materials.

You can read more about an overview of Matrix organizations in this [PMI article](#).

Key takeaway

In both Classic and Matrix organizations, project managers must clearly define roles and responsibilities in order to work effectively. However, within most Matrix organizations, some project managers or department leads may have the same level of authority as the functional managers and operate more directly.

Now you know how to identify Classic and Matrix organizational structures, how project managers fit into them, and how an organization's structure may affect projects. You are well on your way to becoming a great project manager in any organizational structure!

✓ Completed

Go to next item